



Educating tomorrow's IT experts



Junior High School

- Identify talented candidates
- Introduce students to opportunities

High School (TAFF IT/ Computer Science)

- Student for two years
- Teacher and student for final two years

College/ University

- NTNU
- HISF
- Summer internship

Bachelor Degree

- Thesis written for TAFF company
- Work as a teacher for TAFF while completing thesis

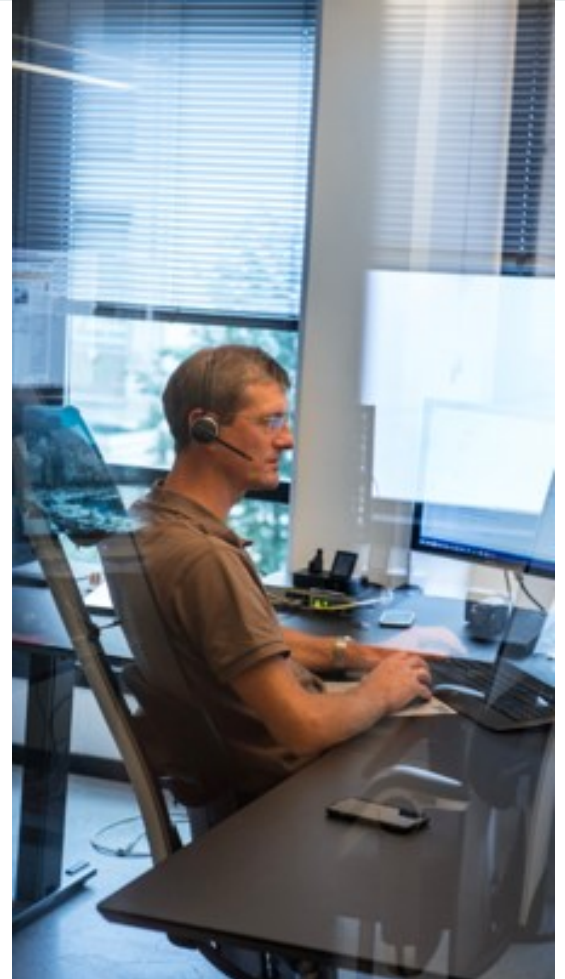
From IDEA to COMPANY

- Local capital
- Network

Business & Education Combined

A customised plan

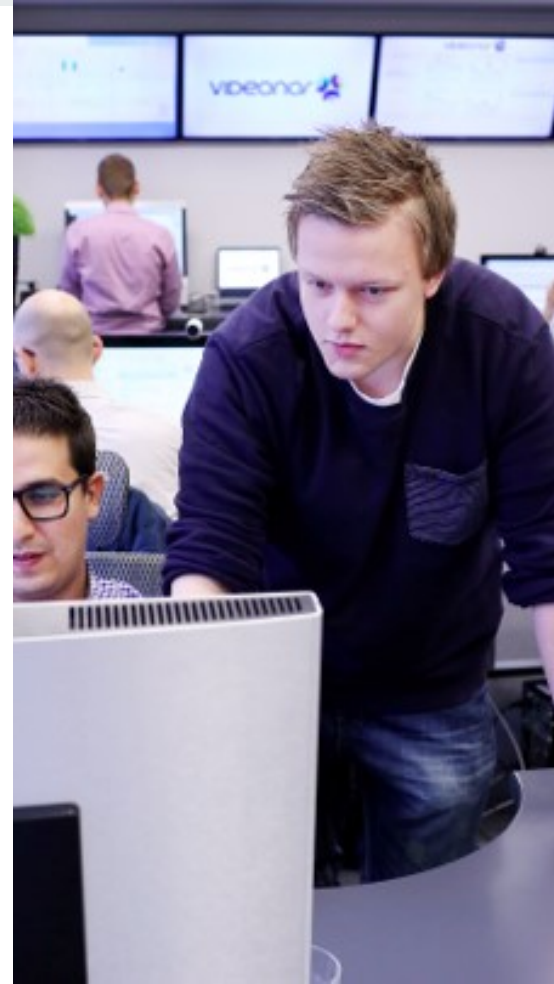
- A custom plan for the needs of tomorrow
- Perfect platform for higher education
- Find the best at early age, nurture and develop them to succeed.

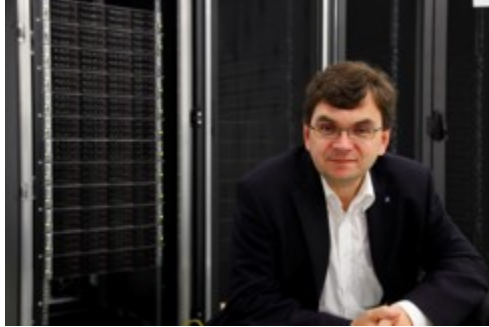


Teachers & Advisors

Highly skilled colleagues

- Approved for apprenticeship
- Average of 12 years experience
- Extensive hardware and software knowledge
- R&D departments
- Professional lab data centers in classrooms
- Extensive networks to world renowned industry professionals (Rittal, IMB, NTNU, and Innovation Norway)
- Track record of successfully graduated students





Lab & Training

A cutting edge school

- Access to state of the art facilities
 - Testing on the latest servers
 - Work on the latest technology and services
 - Exposed to real customer interaction
 - Help solve business critical challenges



Lefdal Mine

*Europe's largest
datacenter*

Operational training in:

- Lefdal Mine, Europe's largest datacenter
- Videonor, Norway's largest Video as a Service provider
- Localhost, the leading fully managed service provider in the region



Junior High School

- Identify talented candidates
- Introduce students to opportunities

High School (TAFF IT/ Computer Science)

- Student for two years
- Teacher and student for final two years

College/ University

- NTNU
- HISF
- Summer internship

Bachelor Degree

- Thesis written for TAFF company
- Work as a teacher for TAFF while completing thesis

From IDEA to COMPANY

- Local capital
- Network

Capital

A key component

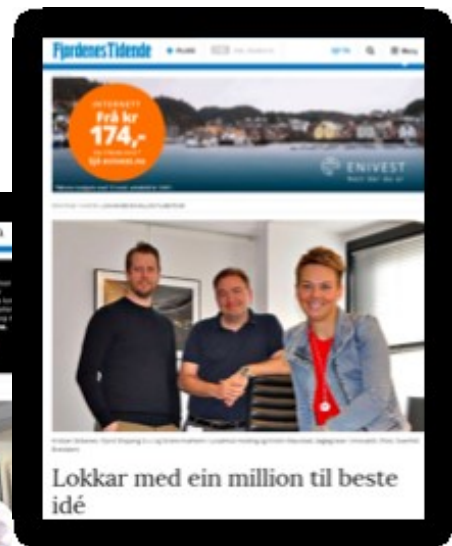
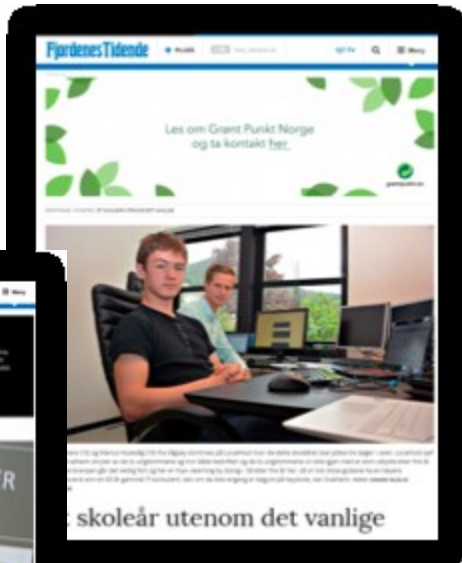


A network diagram consisting of a grid of blue lines connecting various circular nodes. Some nodes are larger and contain a blue silhouette of a person wearing a hijab, while others are smaller and contain a blue padlock icon. A diagonal blue band runs from the top-left to the bottom-right across the image.

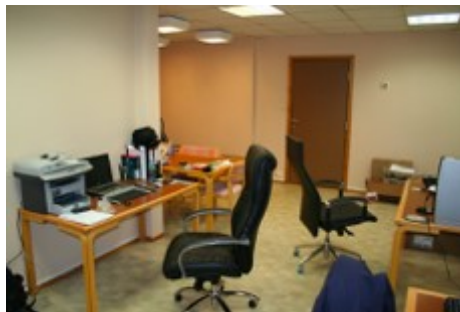
Our Network

Ideas - actions - results

From plan to execution



Who are we looking for?



Ideal candidates: *Standards & expectations*

- Students need the **will** to be a part of Måløy Academy
- You need the **skillset** to be part of Måløy Academy
- You need to **bring value** to our companies



Two different competencies

- YSK + DATA TECHNOLOGIES + NTNU + HISF = Måløy Academy
- What is the difference between a Data Electronics and a YSK / TAFF



MÅLØY
ACADEMY

